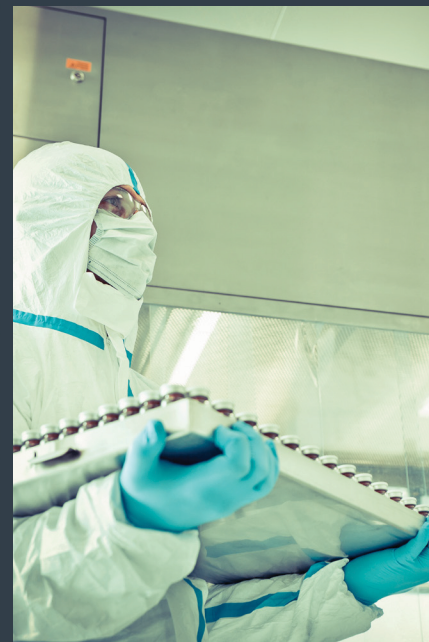


SAFER | HEALTHIER | MORE PRODUCTIVE

YOUR EXPERTS IN CLEANROOM FILTRATION SOLUTIONS





Flowstar® Cleanroom Panels & Ducted Terminal Modules

Flowstar Cleanroom Panels and DTMs have minipleated wet laid microglass media. Minimum removal efficiencies of 99.99% (HEPA) on 0.3 μ m particles and up to 99.9995% (ULPA) on 0.12 μ m particles are designed for easy installation, optimal performance and longer life.

Because cleanrooms require the highest standards for air purification, we deliver the highest standards of products. With our products, our distributors meet the most stringent cleanroom standards in healthcare, pharmaceutical, manufacturing, aerospace research facilities.

All Filters are serialized for production validation test reporting and available upon request.

- Expanded powder-coated, white screens protect the media pack.
- Computer controlled, automated pleating equipment optimizes product performance.
- Media pack configurations are designed for minimal pressure drops to lower energy costs.



Product Type	Standard Pack Depths	Filter Frame Depths	Seal Options
Cleanroom Panels	2.0" -5.5" (2 thru 5.5)	2.72" - 5.88"	Gasket, Gel, Knife Edge
Ducted Terminal Modules	2.0" -4.0" (2, 2.5, 3 and 4)	5.25" - 7.25"	Gasket, Knife Edge



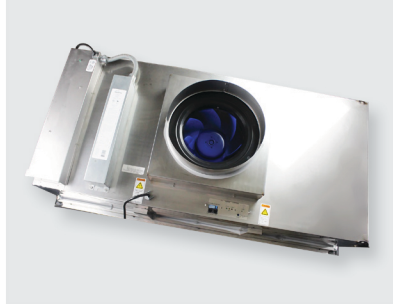
Together, We are Making the World Safer, Healthier and More Productive

Our industry-leading products include: prefilters, efficiency filters, HEPA & ULPA filters and gas phase filtration.

We make sure our products are available when you need them.

Critical Environments Require Sophisticated Equipment

We provide protection for cleanroom solutions with room side serviceable HEPA & ULPA filters



Flowstar VS100 & VS250 FFU

- Up to 250FPM, great for environments needing high air changeout rates with limited ceiling space.
- Room side replaceable filter and motor.
- Fully welded T304 stainless steel plenum.
- Various control packages to suit application specific requirements.
- Lighting and battery backup option for cleanrooms with limited ceiling space.



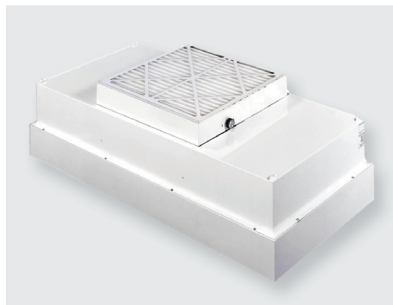
Flowstar CED

- Room side serviceable diffuser with HEPA or ULPA gel seal filters.
- Removable hinged perforated white finish grille with 1/4 turn fasteners and safety chain.
- Largest filter face area design in the market for higher volume output.



Flowstar Pharma RTM

- Room side serviceable diffuser with HEPA and ULPA gel seal filters.
- Fully welded to create a leak free pressure boundary that is factory validated at 4"WG.
- Optimized for laminar airflow, low pressure drop, ease of installation and certification at install.



Flowstar Sentinel

- Our workhorse PSC motor Fan Powered Terminal module.
- For most common cleanroom and bio-safety application.



We Customize Your Cleanroom Solutions

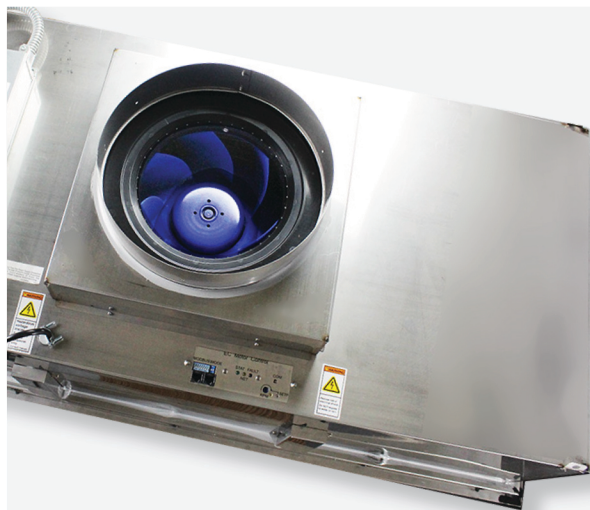
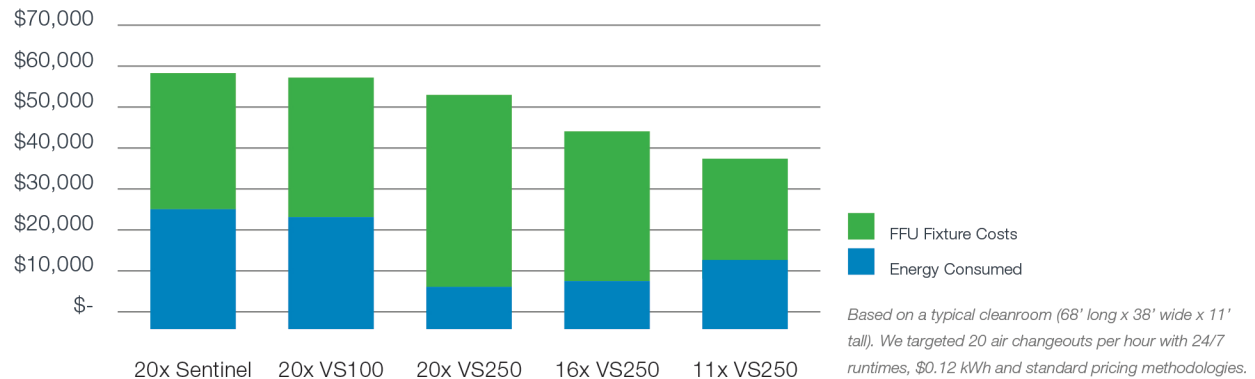
Our replenishment filters ensure that your system runs with optimal efficiency.

High Cleanroom Standards Require High Quality Products

Flowstar® VS250 Fan Filter Units - High Flow, Low Energy FFUs for Critical Environments

VS250 Lowers Your Total Cost of Ownership (TCO)

In the graph below, we compare energy consumption and fixture costs. In the first three examples, we incorporated 20 units and decreased the quantity of the VS250 to reduce the TCO while maintaining the CR ISO 7 classification. The more efficient your system is, the likelihood for contamination is lessened, and the lower your total cost will be.



VS250

The Most Comprehensive FFU Available

- Ambient lighting for Classes 2-5 requiring up to 100% ceiling coverage.
- LED technology that doubles the output of standard, stand-alone fixtures and can produce up to 9000 lumens from a 2 x 4 fixture.
- Green LED light option for Operating Rooms (ORs) and battery backup during emergencies.



CONTACT US FOR A **FREE** CONSULTATION AND WE WILL HELP YOU FIND THE MOST SUITABLE SOLUTION.



United States

Phone: 1 800 739.4600
Email: aerostar@filtrationgroup.com
Website: FiltrationGroupIAQ.com

Canada

Phone: 1 888 628.3458
Email: inquirycanada@filtrationgroup.com
Website: FiltrationGroupIAQ.com