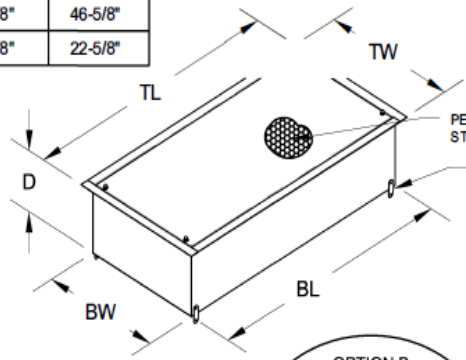


	UNITS WITH 5/8" TRIM		UNITS WITH 1-1/2" TRIM	
	2X2	2X4	2X2	2X4
TRIM LENGTH (TL)	23-5/8"	47-5/8"	25-3/8"	49-3/8"
TRIM WIDTH (TW)	23-5/8"	23-5/8"	25-3/8"	25-3/8"
BODY LENGTH (BL)	22-5/8"	46-5/8"	22-5/8"	46-5/8"
BODY WIDTH (BW)	22-5/8"	22-5/8"	22-5/8"	22-5/8"

ORDER DETAILS	
ITEM#	QTY. REQ.
1	
2	
3	
EX.	4

STANDARD OPTIONS
(CHECK IF APPLICABLE)

- MATERIAL**
- .063" ALUMINUM
 - T-304 STAINLESS
 - T-316 STAINLESS
 - L GRADE
- INSULATION**
- NONE
 - 2" FOIL BACKED
 - TOP ONLY
 - TOP AND SIDES
- FILTER SIZE (FLUID SEAL)**
- 2 X 2 (FILTER DIM. 21- 5/8" X 19-7/8" OD)
 - 2 X 4 (FILTER DIM. 21- 5/8" X 43-7/8" OD)
- DEPTH**
- 9" (2" MEDIA PACK)
 - 12" (2" OR 4" MEDIA PACK)
 - 14" (2", 4" OR 6" MEDIA PACK)
- DAMPER / INLET SIZE**
- 8" 12"
 - 10" 14"
- HANGING TABS**
- YES
- AEROSOL INJECTION PIPE (DOP)**
- NOT REQUIRED
 - REQUIRED
- PLUG TYPE:**
- PLASTIC (STD.) BRASS QUICK DISCONNECT



CONFIGURATION	DEPTH 'D'
2" MEDIA PACK	9"
2" OR 4" MEDIA PACK	12"
2", 4", OR 6" MEDIA PACK	14"

FACE GUARD / GRILLE OPTIONS

- FLUSH WITH 4 ACORN NUTS
- 2" EXTENDED WITH 4 ACORN NUTS
- PERMANENT HINGED GRILLE WITH 2 ACORN NUTS
- REMOVABLE HINGED GRILLE WITH 2 ACORN NUTS

INLET TYPE

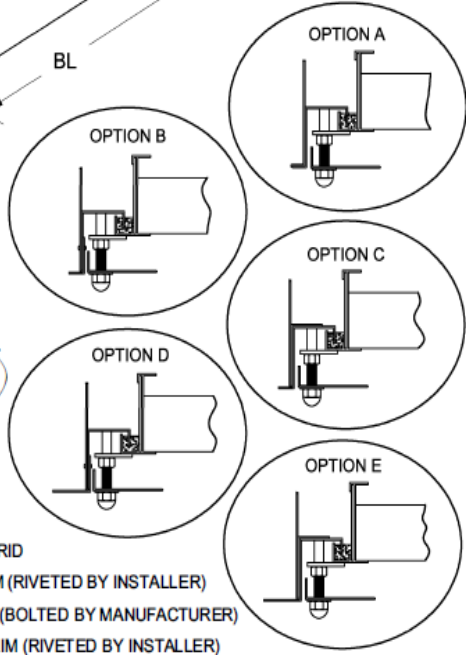
- RIBBED
- SWAGED

DAMPER STYLE

- BUTTERFLY
 - STANDARD (ALUMINUM)
 - HEAVY DUTY (STAINLESS)
- GUILLOTINE

TRIM OPTIONS

- (OPTION A) 5/8" TRIM FOR T-BAR GRID
- (OPTION B) 5/8" REMOVEABLE TRIM (RIVETED BY INSTALLER)
- (OPTION C) 5/8" PERMANENT TRIM (BOLTED BY MANUFACTURER)
- (OPTION D) 1 1/2" REMOVEABLE TRIM (RIVETED BY INSTALLER)
- (OPTION E) 1 1/2" PERMANENT TRIM (BOLTED BY MANUFACTURER)



SPECIFICATION INFORMATION

Customer Information: _____

Item Number: _____

For Non-Standard Sizes, Please Consult the Factory.

_____ (H) X _____ (W) X _____ (D)

Please Specify Size as Nominal or Exact _____

SPECIFIED OPTIONS

Customer Initial and Date for Product Specification _____



Pharma RTM

1.) The hood body shall be seal welded and caulked. The inlet shall be intermittently welded and caulked. The final assembly shall be tested per internal manufacturer procedure PGM-502 typical, assuring the unit assembly to be free of any leaks. Filter fit shall be checked before the unit leaves the factory.

****If you do not see the options you require the manufacturer can custom design your hood to nearly any size and specification.**

Rev	VM	Date:	4/23/2018	Drawing Number:	CSD-010	Revision:	06
				FiltrationGroupIAQ.com			